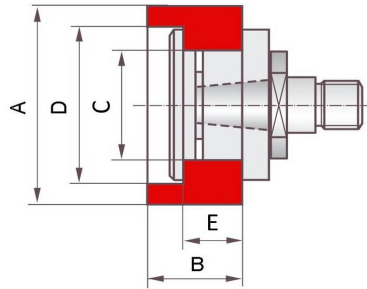
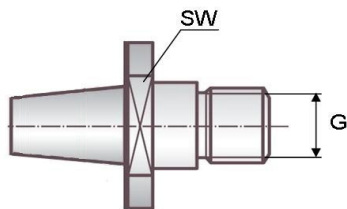


Preisänderungen aufgrund von Wechselkursanpassungen möglich
Price changes due to exchange rate adjustments possible

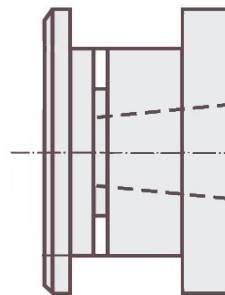


Planschleifdorn komplett <i>Face grinding arbor complete</i>		bestehend aus / consisting of				Schleifscheibe <i>Grinding wheel</i>					Anfrage <i>Request</i>
Bezeichnung <i>Description</i>	Art. Nr. <i>Art. No.</i>	Schleifscheibenflansch <i>Grinding wheel flange</i>		Aufnahmedorn <i>Adaptor</i>		A	B	C	D	E	Anzahl <i>Quantity</i>
		Bez. <i>Descr.</i>	Art. Nr. <i>Art. No.</i>	Bez. <i>Descr.</i>	Art. Nr. <i>Art. No.</i>	[mm]	[mm]	[mm]	[mm]	[mm]	
HJNP 35 re.	51704-110	FJ-50	30204-021	HJNA-35	51704-427	80	40	40	55	16	
HJNP 28 re.	51804-110	FJ-60	30204-022	HJNA-28	51804-429	100	50	45	65	20	
HJNP 21 re.	52004-110	FJ-70	30204-023	HJNA-21	52004-429	125	63	50.8	75	25	
HJNP 16 re.	112390	FJ-80	30204-024	HJNA-16	52204-441	150	80	58	85	30	



Aufnahmedorn <i>Adaptor</i>		Abmessungen [mm] <i>Dimensions [mm]</i>		Anfrage <i>Request</i>
Bez. <i>Descr.</i>	Art. Nr. <i>Art. No.</i>	G	SW	Anzahl <i>Quantity</i>
HJNA-35	51704-427	M14x1.5	27	
HJNA-28	51804-429	M16x1.5	32	
HJNA-21	52004-429	M22x1.5	41	
HJNA-16	52204-441	M27x2	50	

Schleifscheibenflansch <i>Grinding wheel flange</i>	
Bez. <i>Descr.</i>	Art. Nr. <i>Art. No.</i>
FJ-50	30204-021
FJ-60	30204-022
FJ-70	30204-023
FJ-80	30204-024



Anfrage <i>Request</i>
Anzahl <i>Quantity</i>